



# C E R T I F I C A T E

**Certificate No. 09-PPV-00046/01-M02-TIC**

**WE HEREBY CERTIFY THAT THE PHOTOVOLTAIC MODULES WITH THE MODEL**

## **SOLEOS 240-2MS & SOLEOS 250-2MS**

**Asola 240W/60 - 156SM3BB ( Tested types )**

Type	Cell Number	Cell Size	Power [W]
SOLEOS 240-2MS*	60	6"	240
SOLEOS 250-2MS*	60	6"	250

**MANUFACTURING & LICENSE HOLDER**

**SOLEOS SOLAR GMBH**

Lise-Meitner-Straße 8 D-53332 Bornheim - Gewerbepark Sechtem (Cologne)

**IS IN COMPLIANCE WITH THE REQUIREMENTS OF**

**IEC 61215 : 2005**

Crystalline silicon terrestrial photovoltaic (PV) modules – Design qualification and type approval

**&**

**EN 61730-1 / EN 61730-2 : 2007**

Photovoltaic (PV) module safety qualification

To be used in plants at a total voltage up to : 1000 Vdc (application Class A)

**AS RESULT OF THE TEST IN OUR APPOINTED LABORATORY**

**EUROTEST LABORATORI**

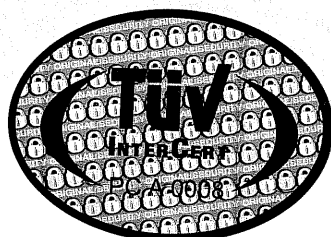
(EA ACCREDITED LABORATORY N. 0192)

**REPORT No. TIC-PVC01CdO09C476001**

**Expiring date 17.06.2012**

*( Providing that the testing basis continues unchanged )*

**Notes: (\*)** The manufacturer and OEM applicant declare that these products are constructed using the same materials, components and processes as the tested type Asola 240W/60 - 156SM3BB. Further details on certified models are reported on the attachment. Technical data, materials and components description are into the indicated test reports. Any changes of the design, materials, components or processing may require the repetition of some of the qualification tests in order to retain type approval. The certification is performed on tested model as retest performed according to IEC61215 "Retesting guideline" for similarity with model asola XXYW/60-156EM388 with differences in cell technology (certificate n° 21208636-4 and 212 08636-5 released by TUV Rheinland in date 09/02/2009). This certificate is for type approval and based on voluntarily product test without Factory Inspection.



# TUV INTERCERT

Am Bonner Bogen 2, D-53227 Bonn, 10.09.2009

Dipl.- Ing. F. Sergazarea

TUV INTERCERT Certification Body